

**THE COUNCIL OF THE BOROUGH OF MILTON KEYNES (THE COUNCIL OF THE BOROUGH  
OF MILTON KEYNES (CENTRAL MILTON KEYNES) (ON-STREET RESIDENTS' PERMIT  
PARKING PLACES) ORDER 2005) VARIATION ORDER 2009**

The Council of the Borough of Milton Keynes ("the Council") in exercise of its powers under Sections 45, 46, 49 and 53 and Part IV of Schedule 9 of the Road Traffic Regulation Act 1984 ("the Act of 1984") and of all other enabling powers, and after consultation with the chief officer of police in accordance with Part III of Schedule 9 to the Act of 1984, hereby makes the following Order:

**PART 1**

**IMPLEMENTATION AND CITATION**

1. This Order shall come into operation on the 5<sup>th</sup> day of May 2009 and may be cited as "The Council of the Borough of Milton Keynes (The Council of the Borough of Milton Keynes (Central Milton Keynes) (On-Street Residents' Permit Parking Places) Order 2005) Variation Order 2009".
2. Any reference in this Order to any enactment shall be construed as a reference to that enactment as amended by any subsequent enactment.
3. The plans annexed to this Order identify the lengths of road subject to this Order, provided that where there is any inconsistency between the plans and the Articles it is the wording of the Articles which shall prevail.
4. The plans annexed to this Order are hereby annexed to The Council of the Borough of Milton Keynes (Central Milton Keynes) (On-Street Residents' Permit Parking Places) Order 2005 and form part of the Order.

**PART 2**

**VARIATIONS**

5. The Council of the Borough of Milton Keynes (Central Milton Keynes) (On-Street Residents' Permit Parking Places) Order 2005 ("The Principal Order") is varied as provided by the following provisions of this Order:-

The following item in Schedule 1, Part B of the Principal Order is revoked and replaced with the following:-

**SOUTH FIFTH STREET – SOUTH-EAST SIDE**

RP21 From a point approximately 93.1 metres south-west of its junction with Avebury Boulevard for a distance of approximately 66.7 metres in a generally south-westerly direction.

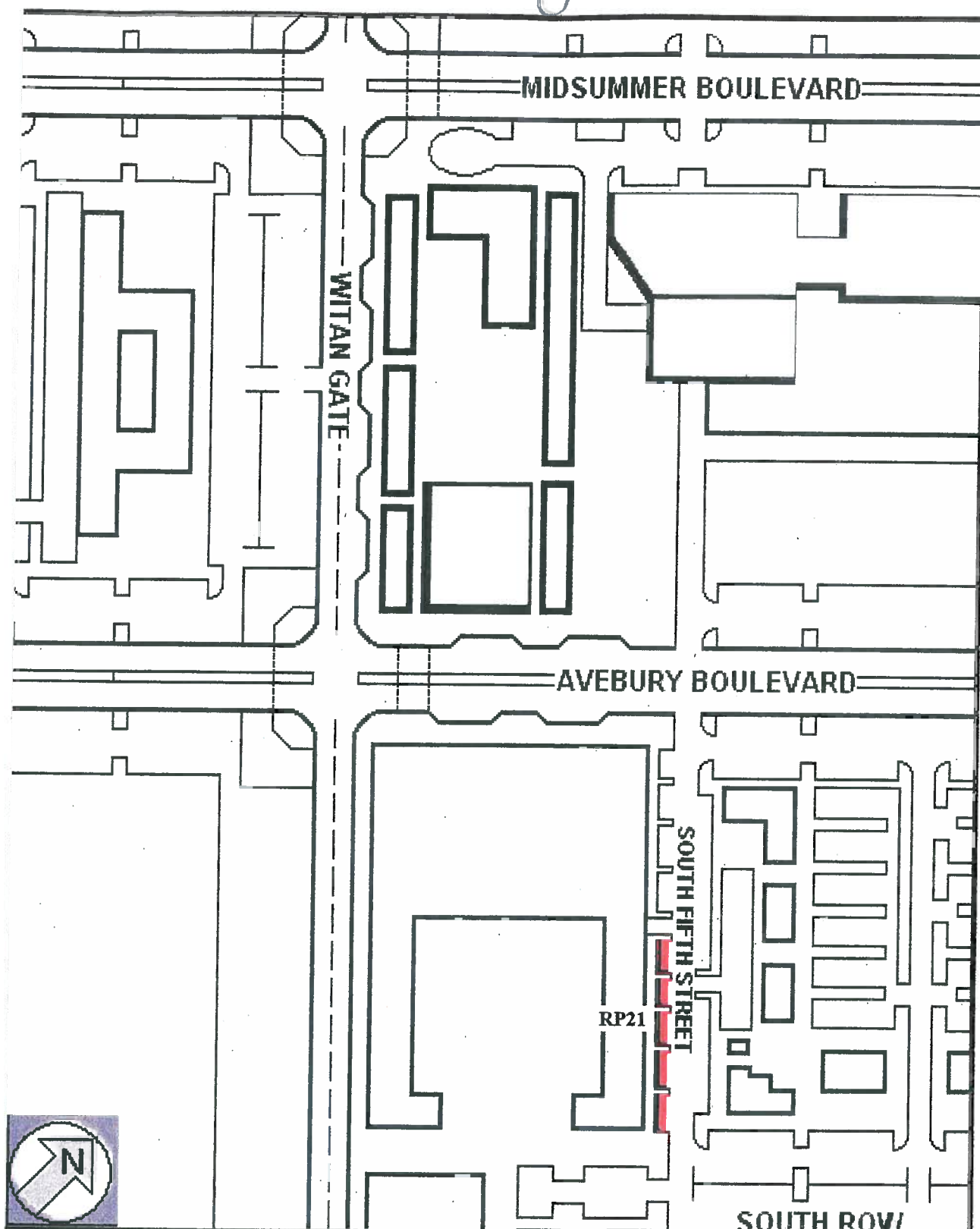
THE COMMON SEAL OF the **COUNCIL OF  
THE BOROUGH OF MILTON KEYNES** was  
hereunto affixed this 30<sup>th</sup> day of April 2009  
in the presence of:-




.....  
HEAD OF LEGAL SERVICES AND MONITORING OFFICER



18495



**Notes:**

-  Residents' Permit parking
- RP21 TRO reference number

Map referred to in the Council of the  
Borough of Milton Keynes (The Council  
Of the Borough of Milton Keynes)  
(Central Milton Keynes) (On-Street  
Residents' Permit Parking Places)  
Order 2005) Variation Order 2009

Not to Scale

The common seal of the Council of the  
Borough of Milton Keynes was hereunto  
Affixed in the presence of:

  
HEAD OF LEGAL SERVICES AND MONITORING OFFICER



18495